

# GlueLogix RFID Subsystems

Read Test UHF and HF at 20/sec continuous

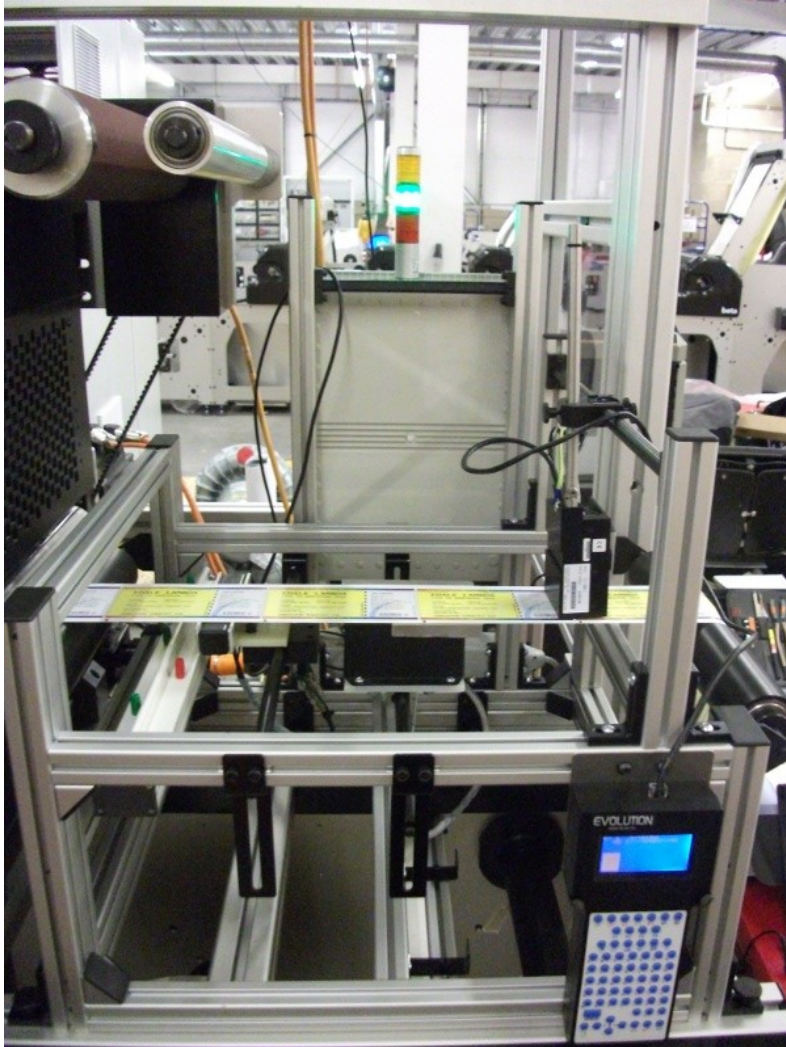
Encode UHF and HF stop-start

Read Barcodes, Bulk Encode, Variable Print

Customization and Consulting

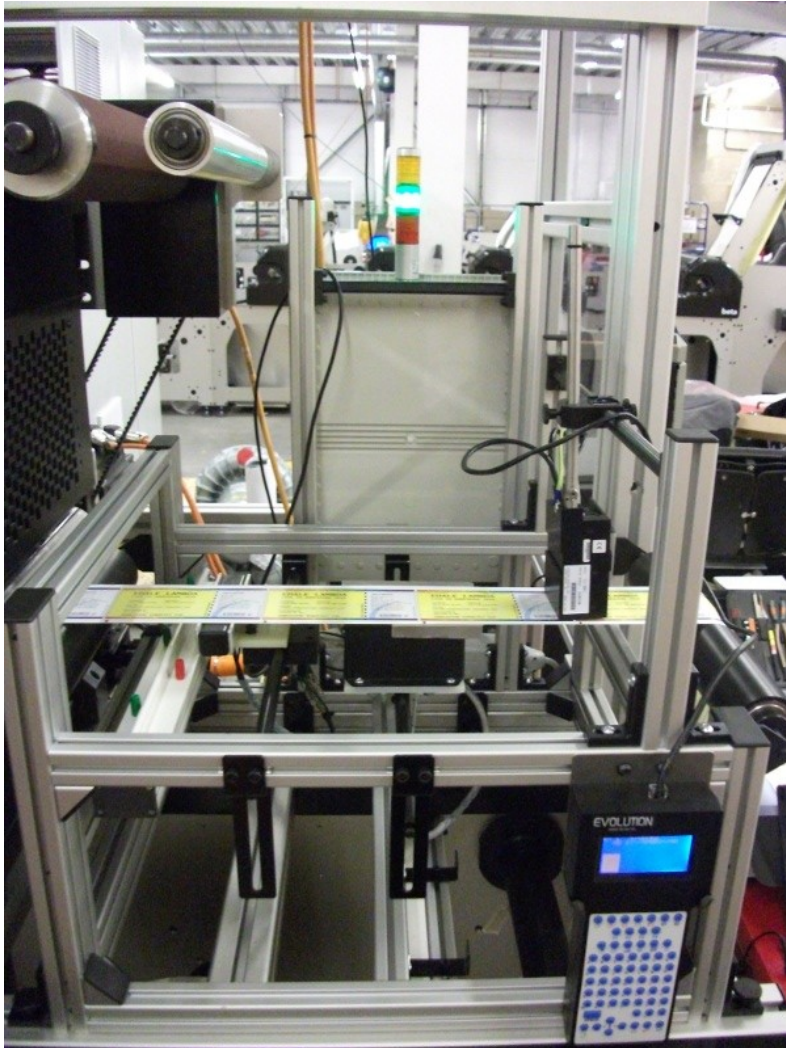


# Read Test



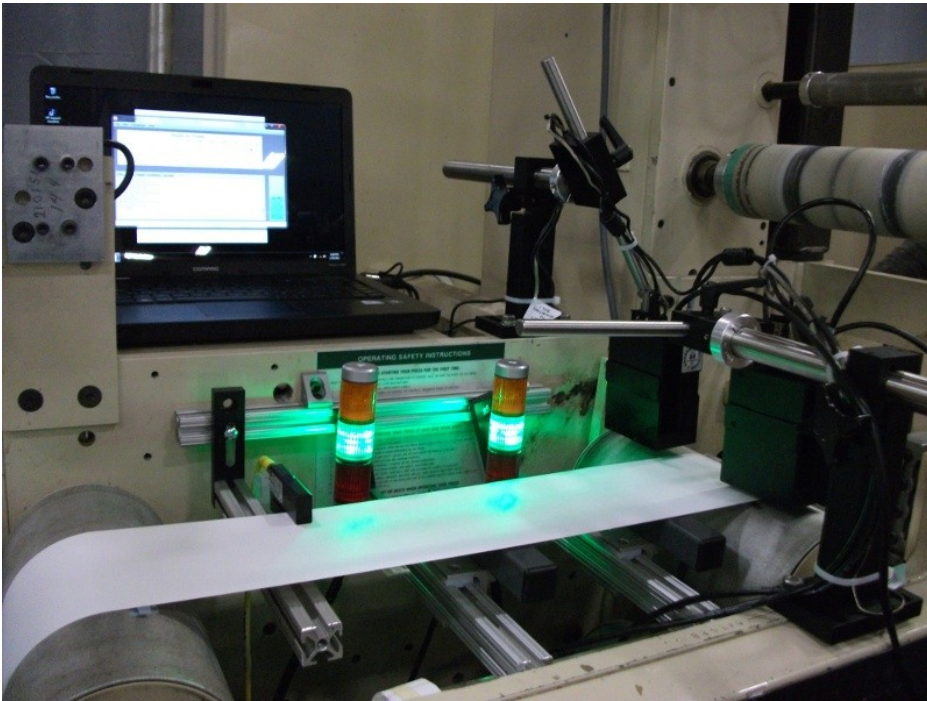
- Verify Source Roll Yields
- Verify inlays Cut and Inserted Correctly
- Verify Inlays Undamaged by Nip, Diecut or Perf.
- 20/sec

# Read Test



- Single lane installation on New Press
- UHF and HF (“U+HF”)
- Inkjet Marker for Bad Tags
- Highly Visible Status Lights
- 20/sec

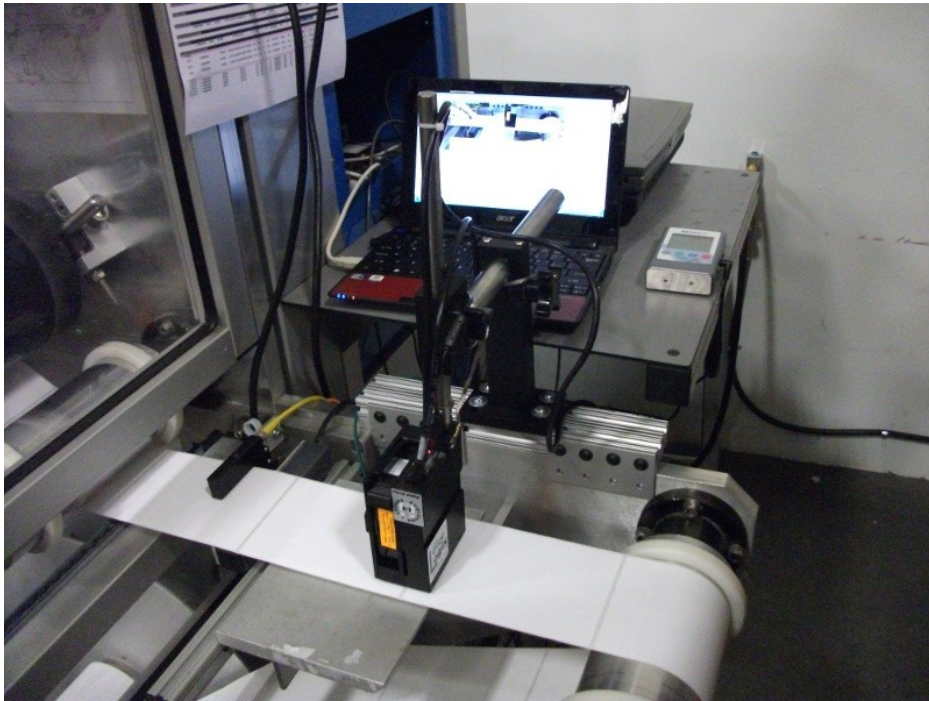
# Read Test



- Retrofit to Mark Andy press
- Two lanes UHF
- Two lanes Inkjet
- Very Compact
- 20/sec



# Read Test



- Retrofit to Schober
- One lane UHF
- One lane Inkjet
- Allows Schober to run at top speed with almost all label repeats

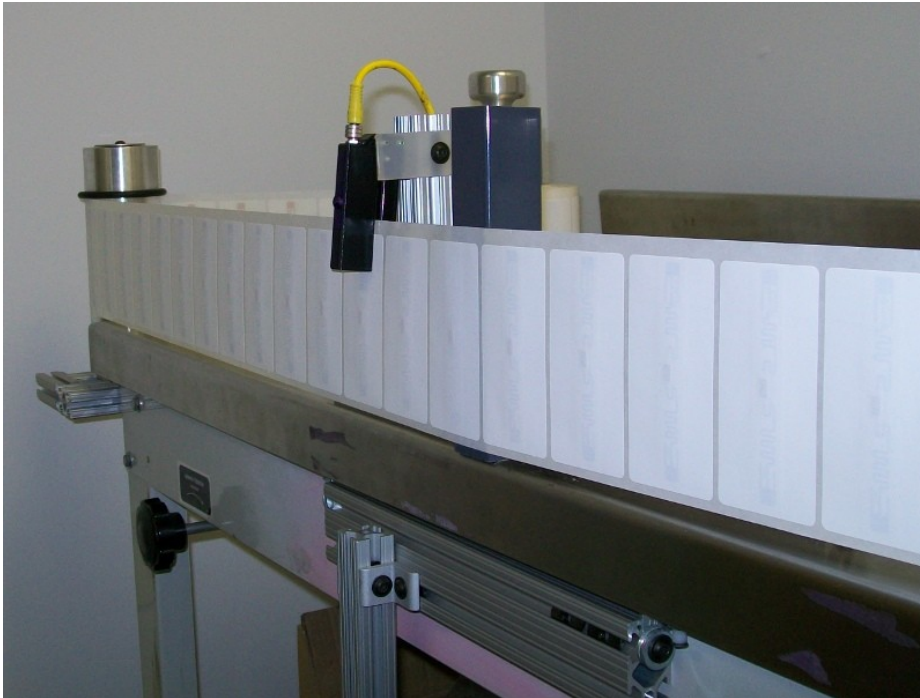
<http://www.gluelogix.com/TagsOnSchober.avi>

# Variable Print



- Read UID from Mifare Ultralight
- Computed Human Readable Checksum
- Printed via VideoJet
- Two Lanes
- 20/sec

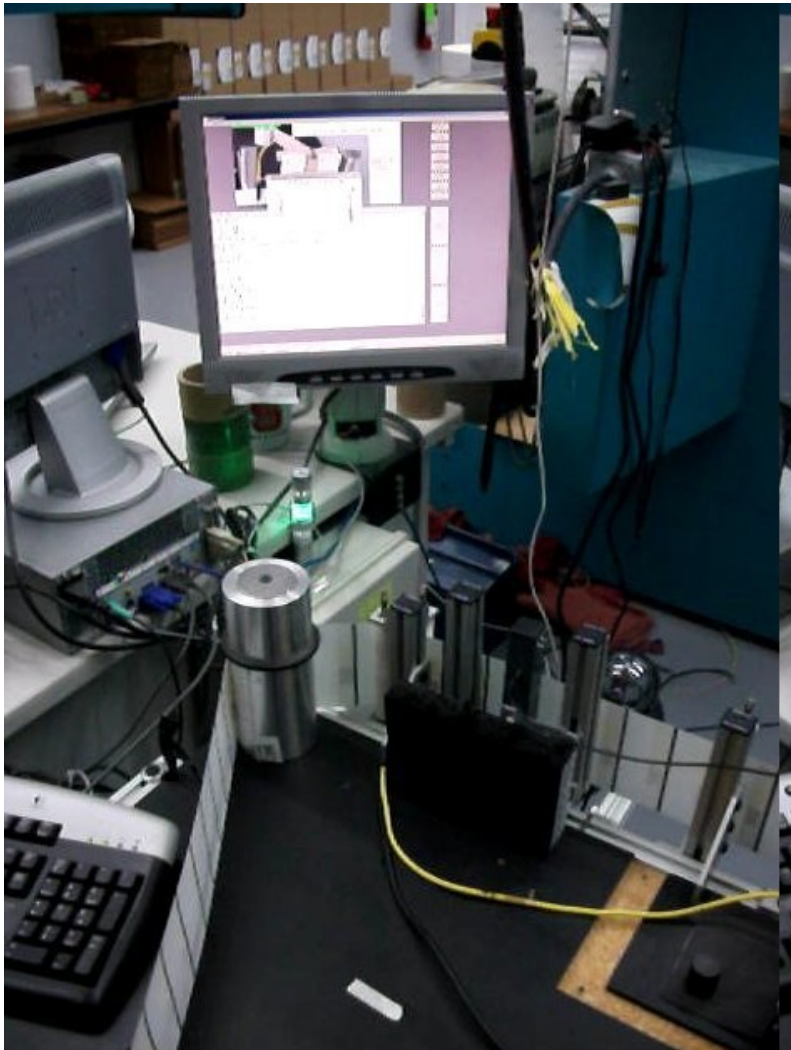
# Read Test On Table



- Add Front Corner Rollers
- Test UHF and HF
- Stop or Mark on Bad
- Same hardware as On-Press
- Speed Limited by Web Stability

<http://www.gluelogix.com/LineLogixOnRewindTable.WMV>

# Encode On Table



- Standard Rewind Table, Wire Into Stop Contact
- Stop Each Inlay Over Antenna
- Encode and Advance
- Stop with Yellow Light on Bad
- Speed Limited by Protocol



# Encode From Barcode On Melzer



More Information:

<http://www.gluelogix.com/LineLogix.shtml>